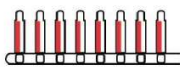


**PACKTOPACKOFF**  
END-OF-LINE AUTOMATION



# StackUp

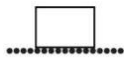
High Speed Milk Crate Stacker



PRIMARY  
CONVEYING



CASE  
PACKING



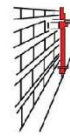
SECONDARY  
CONVEYING



TRACE & TRACK



PALLETIZING



WAREHOUSE  
AUTOMATION



TRUCK LOADING

**Reflex Technologies Pvt. Ltd.**

EL51, Electronic Zone, MIDC, Mahape, Navi Mumbai 400710 INDIA.

Tel : +91 022 27682584; Email: [sales@reflexautomation.com](mailto:sales@reflexautomation.com) ; [www.reflexautomation.com](http://www.reflexautomation.com)

## Machine Description

The only solution to growing consumer demand is to increase production efficiently. As we progress, Automation no longer remains a luxury. Automation has become a necessity.

In India's fast growing Dairy Industry, plant capacity of a few lpd is becoming the norm. In such high volume pouch filling lines, the crate stacking operation is proving to be a bottleneck. **StackUp** was developed by Reflex to meet exactly this demand from the industry.

In a typical layout, crates from various FFS machines are diverted to a trunk conveyor, which in turn carries all the crates to the cold room. At the exit of this trunk conveyor speeds can be as high as 20 crates per minute. This flow of crates forms the input to **StackUp**. **StackUp** stacks these crates and presents them at the output to be carried away by the operator.

## Models Available

<b>StackUp 10</b>	Basic model handling 10 crates per minute
<b>StackUp 10 Plus</b>	Basic model handling 10 crates per minute with 3 stack output buffer
<b>StackUp 20</b>	Basic model handling 20 crates per minute
<b>StackUp 20 Plus</b>	Basic model handling 20 crates per minute with 3 stack output buffer

## Machine Salient Feature

1	Can handle crate speeds of up to 20 crates per minute (1200 crates per hour)
2	IP54 design ensure trouble free running.
3	Use of high quality standard product ensures high reliability and ease in maintenance.
4	Simple and robust escapement mechanism ensures perfect flow of crates into StackUp.
5	<b>StackUp</b> designed to tolerate crate dimensional variation.
6	Minor cracks in crates handled by <b>StackUp</b> . However crate stability when in loaded condition depends on the crate itself.
7	Safety guards and covers ensures operator safety.
8	In the event of a machine breakdown, machine can be bypassed to assist manual stacking operation. Choose options.
9	Audio Visual alarm intimates the operator if outfeed conveyor is about to be filled up (programmable) with stacks
10	Number of crates per stack programmable.

**Reflex Technologies Pvt. Ltd.**

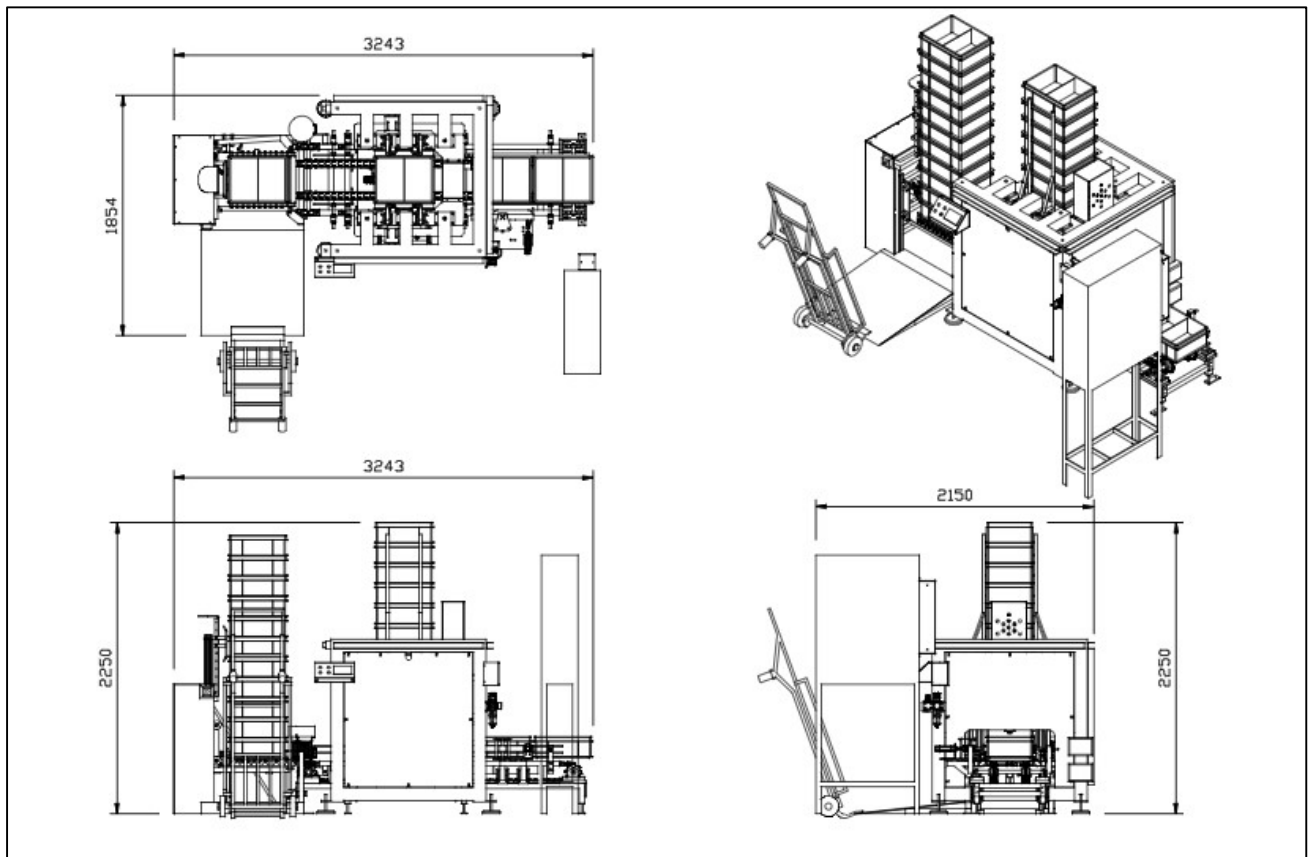
EL51, Electronic Zone, MIDC, Mahape, Navi Mumbai 400710 INDIA.

Tel : +91 022 27682584; Email: sales@reflexautomation.com ; www.reflexautomation.com

## Machine Technical Specifications

Technical Specification	
Speed	10 to 20 crates per min depends on model
Crates per stack	11 (programmable)
Input conveyor height	400 mm*
Crate Dimension	427mm x 378mm x 168mm (L x W x H)*
Tolerance accepted in dimension	3 mm*
Material of Construction	SS
Power Supply	Single Phase 230 V
Power Consumption	2.2 kW
Air Supply	6 Bar
Air Consumption	6 CFM

## Machine Dimensions (StackUp 10)



## Notes

**Reflex Technologies Pvt. Ltd.**

EL51, Electronic Zone, MIDC, Mahape, Navi Mumbai 400710 INDIA.

Tel : +91 022 27682584; Email: [sales@reflexautomation.com](mailto:sales@reflexautomation.com) ; [www.reflexautomation.com](http://www.reflexautomation.com)